

Oceanic mass changes in consideration of geocenter motion corrections

Andrea Homberg

contact: homberg@gfz-potsdam.de

GeoForschungsZentrum Potsdam (GFZ)

Department 1: Geodesy and Remote Sensing

Telegrafenberg, D-14473

International GSTM + DFG-SPP Symposium

Potsdam, 15 October 2007

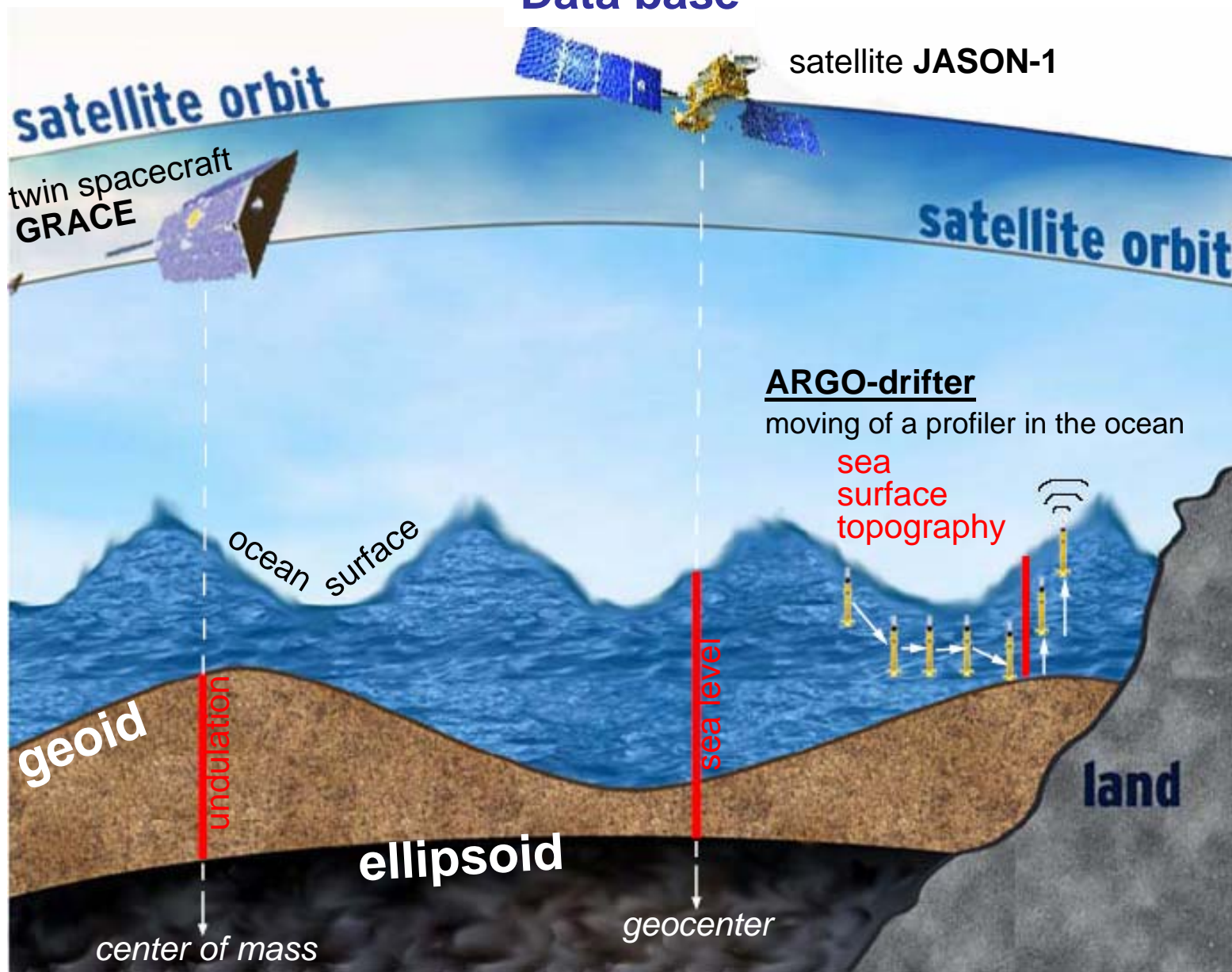


Figure1: Simplified view of reading techniques

control of geocenter motion

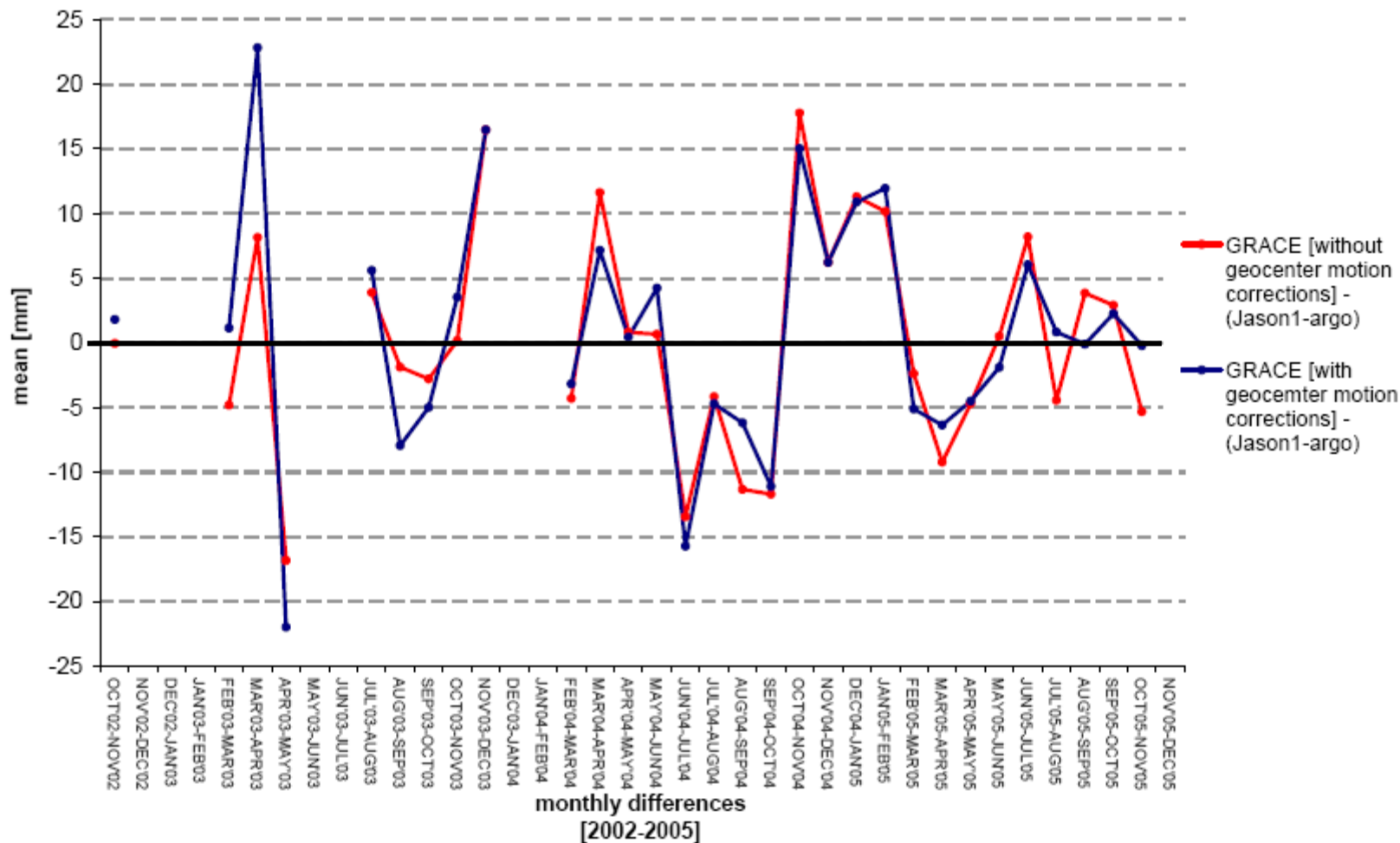


Figure2: control of GRACE data products regarding by geocenter motion corrections